

 Ply Gem®

**SIMONTON®**

WINDOWS & DOORS



**Simonton ProFinish®  
Contractor and Builder Series  
New Construction Windows**

**LIFETIME LIMITED WARRANTY**

## NEW CONSTRUCTION PRODUCTS

**Simonton ProFinish® Contractor and Builder Products** (“Product”) include the following parts: vinyl components, hardware components, glass, and screens. This Limited Warranty applies only when all of these parts are genuine Simonton components.

## COVERAGE

### Residential - Lifetime Limited Warranty

### Commercial/Multi-Resident - 10 Year Limited Warranty

Subject to the limitations and exclusions herein, and for the duration of the applicable Warranty Period of the Residential Warranty Holder or Commercial/Multi-Resident Warranty Holder (as defined below), Simonton Windows, Inc. and Simonton Industries, Inc. (collectively hereinafter, “Simonton”), warrants that the Product will be free from non-conformities in material and workmanship. Simonton will repair or replace any Product that fails to meet this Limited Warranty of a Residential Warranty Holder that is installed up to an elevation of not more than three stories (for Product installations over three stories contact Simonton for warranty consideration) provided in either case, Simonton may refund the purchase price (the lesser of the original Product/component purchase price or the original catalog list price) if in Simonton’s opinion such repair or replacement is not commercially practical or reasonable or cannot timely be made. This Limited Warranty is applicable to Products purchased and installed in the United States or Canada only.

### Labor

Labor costs are not included in this Limited Warranty and neither Simonton nor its distributors will be responsible for any costs incurred in the removal, replacement, installation, reinstallation or repair of the product.

## WARRANTY PERIOD

***READ the entire Limited Warranty for the conditions and limitations that apply to this information***

ProFinish Contractor & Builder	Warranty Holder - Classification and Duration*		
	Residential		Commercial/ Multi-Resident
	Contractor	Builder	
Vinyl	Lifetime	Lifetime	10 years
Hardware	20 years	20 years	10 years
Screens	20 years	20 years	10 years
Glass	20 years	20 years	10 years
Factory-Applied Exterior Coating	10 years	N/A	3 years (non-transferrable)
Transferable Warranty	20 years*	20 years*	10 years*

\*Measured from the date of the original purchase date of the Product

# Lifetime Limited Warranty

## For Residential Warranty Holder: Double-Lifetime Components Limited

**Transferability for Residential Warranty Holder:** Product Warranty is transferable by the original Residential Warranty Holder once to a subsequent Residential owner, however, the successor's Residential Warranty Period will exist and continue only from the original Warranty Holder's product purchase date until (i) the 20th anniversary of that original purchase date with respect to Vinyl (General), Hardware, Glass and Screens, and (ii) the 10th anniversary of the original purchase date with respect to the Factory-Applied Exterior Coating Option (during the Warranty Period stated in the summary chart); but in each case, for such shorter period of time if it is expressly stated in this Limited Warranty for the Product component; and provided the Limited Warranty has been properly transferred following the procedure set forth below.

If the transfer from a Residential Warranty Holder is to a Commercial/Multi-Resident owner, the Limited Warranty will continue only until (and will expire on) the 10th anniversary of the original purchase date of the Product (that is, the Limited Warranty is only transferable by the original Residential owner to a subsequent Commercial/Multi-Resident owner if the transfer occurs during the first 10 years following the original purchase of the Product, unless a *shorter* period of time is expressly stated for the Product component.) Regardless of the classification of the transferee, the Limited Warranty must be properly transferred following the procedure set forth below in order to be effective.

**Commercial/Multi-Resident Warranty Holder:** Ten (10) years from the earlier of the date Product was shipped from Simonton or an authorized dealer; transferable to successive non-Residential owners during and for any balance of the 10 year Warranty Period (but for such shorter period of time if it is expressly stated in this Limited Warranty for the Product component) and only if the Limited Warranty has been properly transferred following the procedure set forth below. Three (3) year Factory-Applied Exterior Coating limited warranty applies from the earlier of the date Product was shipped from Simonton or an authorized dealer and is **NOT** transferable.

## WARRANTY TRANSFER

Any Warranty Transfer described above will be deemed effective only if the following procedure is properly completed: (1) notice to Simonton within 30 days after the transfer of ownership of the premises where the Products are installed, and (2) a warranty transfer form completed online at [www.simonton.com/warranty](http://www.simonton.com/warranty). Please note you will be required to provide the Product order number (bar code located in the sash head, sill or jamb of each Product).

## WARRANTY HOLDER CLASSIFICATIONS

**Residential Warranty Holders:** If the Product is installed in (1) a new residential dwelling and the first occupant owns the dwelling or (2) an existing owner-occupied residential dwelling, and in each case, at the time of installation such owner is also responsible for Product replacement, then that owner is a Residential Warranty Holder. For example, assume the Product is installed in a condominium unit (a "dwelling") in a multi-resident building. If the first occupant of the

# Simonton ProFinish®

condominium unit is the first owner of that unit (or the first Residential successor of the first owner) and is also responsible for Product replacement, then that owner is a Residential Warranty Holder; however, if the owner is not the first occupant of the condominium (nor the first Residential successor of the first owner) or if someone else other than such owner (for example, the condominium association) is responsible for Product replacement, then the owner is not a Residential Warranty Holder.

**Commercial/Multi-Resident Warranty Holders:** If the Product is installed under conditions in which no one qualifies as a Residential Warranty Holder as described above, then the warranty holder is the owner of the dwelling or building in which the Product has been installed at the time of installation (and its builder and contractor). That owner is classified as a Commercial/Multi-Resident Warranty Holder. For example, this includes owners of commercial or investment buildings, or multi-resident premises in which the occupant is not responsible for Product replacement whether or not the occupant owns the residential dwelling unit in the premises (e.g., certain condominiums, town homes, duplexes, apartments, cooperatives).

This Limited Warranty is further subject to the limitations and exclusions below:

## VINYL

**Residential - Lifetime** *(excluding any Factory-Applied Exterior Coating)*

**Commercial/Multi-Resident - 10 Years**

Vinyl components of Products (excluding any Factory-Applied Exterior Coating) are warranted against peeling, flaking, chipping, blistering and corrosion during the applicable Warranty Period. If such defects occur, Simonton will provide replacement parts at no cost to the Warranty Holder. Shipping and handling fees may be charged. Simonton reserves the right to provide replacement products with comparable functionality, but any such replacement products are NOT guaranteed to match the color of the original Product or component or of other windows or doors in the premises. This Limited Warranty becomes void if the vinyl or any interior surface or laminate is painted, stained, or if the surface is altered in any way, or as provided below at "WHAT THIS WARRANTY DOES **NOT** PROVIDE."

## FACTORY-APPLIED EXTERIOR COATING - CONTRACTOR ONLY

**Residential - 10 Years** *(Transferable and continuing until 10th anniversary of Product original purchase)*

**Commercial/Multi-Resident - 3 Years** *(Not transferable)*

For Products purchased with a Factory-Applied Exterior Coating on the vinyl components, the factory-applied exterior coating is warranted to the Residential Warranty Holder against peeling, flaking, chipping, blistering and corrosion, and for significant ultraviolet fading or discoloration caused by natural environmental conditions (subject to the limitations below), during the applicable Warranty Period. If such defects occur, Simonton may, at its option and in its sole discretion, provide the Warranty Holder factory-authorized repair at no charge, or provide replacement parts only at no charge to the Warranty Holder (the cost assembly and labor would be the responsibility Warranty Holder), or refund the lesser of the purchase price of the original Product, the purchase price of the

# Lifetime Limited Warranty

component, or the catalog list price at the time of the original purchase. Shipping and handling fees may be charged. Repaired or replaced Products or components are **NOT** guaranteed to match the color of the original Product, component, or of other windows or doors in the premises, due, in part, to the normal effects of weathering over time on exterior coating or finishes.

This Limited Warranty does **NOT** include non-conformities or damage attributable to or arising from:

- Any painting, staining, or other alteration of the factory-applied exterior coating surface of the Products
- Minor scratches or minor visual imperfections within the Product's standard manufacturing and quality specification parameters.
- Damage to the factory-applied exterior coating occurring after the Product leaves Simonton's facility, whether arising during pre-installation handling or storage (e.g., inadequate shelter or inadequate venting of shipping wrap in hot and humid locations), installation, maintenance, or otherwise
- Minor scoring or scratching of the factory-applied exterior coating surface due to normal operation of the Products is not considered a manufacturing defect
- Chemicals or solvents (e.g., acidic brick washes, or stucco leach)
- Maintenance inconsistent with the Care and Maintenance recommendations set forth in the Limited Warranty
- Harsh natural environmental conditions (e.g., from substantial exposure to sun, salt spray or airborne pollutants)
- Excessive artificial temperature buildup or exposure (e.g., from the use of storm doors or windows or shutters under certain circumstances)
- Installation in locations or in a manner that exceeds or deviates from product design standards and/or testing and certified performance specifications, and/or is not in compliance with the applicable building code
- Labor for removing, installing, or replacing Product or components or labor for other materials that are removed, reinstalled or refinished in conjunction with repairing or replacing the Product or component
- Fading, discoloration, or color change of the factory-applied color coating that equals or is less than five (5) E units (as calculated in accordance with ASTM D2244, paragraph 6.2, effective on the date the Product is manufacture) and which covers less than a material portion of the exterior vinyl components of the Product. Color change will be measured based on the exposed colored surface of the Product that has been properly cleaned of soils, and the corresponding values measured on the original or unexposed colored surface. Non-uniform fading or color change is a natural occurrence when the exterior surfaces of the Product are not exposed to the sun and other environmental conditions on an equal basis
- Any matter stated in *"WHAT THIS WARRANTY DOES **NOT** PROVIDE"*

## HARDWARE

**Residential - 20 Years**

**Commercial/Multi-Resident - 10 Years**

The Product Hardware (mechanical and locking mechanisms, stainless steel hinge system, hardware finishes (standard and custom)) and other operating hardware components is warranted against peeling, flaking, rusting, blistering, corrosion, and breaking during the applicable Warranty Period. If such defects in the Product Hardware and other operating hardware occur, Simonton will provide replacement parts at no cost to the Warranty Holder. Shipping and handling fees may be charged. Repaired or replaced hardware or Products with hardware are **NOT** guaranteed to match the color of the original Product or component of other windows or doors in the premises. Notwithstanding the foregoing, Product Hardware on Casement/Awning style-windows that are installed within two (2) miles of any body of salt water with stainless steel and/or coastal product hardware (i.e., no finish) is only covered for a TWO (2) YEAR WARRANTY PERIOD that begins to run on the date of the original purchase of the Product. The provisions of "WHAT THIS WARRANTY DOES **NOT** PROVIDE" apply:

Window Product Hardware	Residential	Commercial
<b>Mechanical and Locking Mechanisms and Finish</b> (For windows: cam locks, lift handles, crank handles, and any applied lift/pull handle not extruded as part of the vinyl sash)	20 years	10 years

## SCREENS

**Residential - 20 Years**

**Commercial/Multi-Resident - 10 Years**

The Product's screen frame is warranted to the Residential Warranty Holder against peeling, flaking, blistering and corrosion during the Warranty Period. The fiberglass screen mesh is warranted to the Residential Warranty Holder against insect damage, accidental punctures and tears during the Warranty Period. If such defects occur, Simonton will ship via common carrier replacement screens at no charge to the Residential Warranty Holder. This Limited Warranty does not include:

- Screen material damage caused by domestic or wild animals
- Bent screen frames due to improper installation or removal
- Installation and the cost of labor for screen replacement
- Any matter stated in "WHAT THIS WARRANTY DOES **NOT** PROVIDE"

## GLASS

**Residential - 20 Years**

**Commercial/Multi-Resident - 10 Years**

The installed and sealed insulating glass unit is warranted against permanent and material obstruction of vision from film formation caused by dust or moisture in the air space between the glass during

# Lifetime Limited Warranty

the Warranty Period. The internal grille/grid is warranted against insert slippage, flipping or sagging during the Warranty Period. If such defects occur during the first 20 years of the Residential Warranty Holder's Warranty Period or fail during the first 10 years of the Commercial/Multi-Resident Warranty Holder's Warranty Period, Simonton will provide a replacement insulating glass unit at no charge to the Warranty Holder.

Insulating glass units containing capillary tubes (recommended for use in insulating glass units traveling through or being installed in areas with elevations 5,500 feet or more above sea level) are warranted against permanent and material obstruction of vision from film formation caused by dust or moisture in the air space during the Warranty Period. If such defects occur during the Warranty Period, Simonton will provide a replacement insulating glass unit at no charge. If the glass should fail after the designated time period, Simonton will charge the full selling price for the insulating glass unit.

## **The Limited Warranty for Glass does not include:**

- Minor variations in glass color or imperfections that do not affect the structural integrity of the glass or do not permanently and materially obstruct vision, including but not limited to minor distortion or waviness inherent to heat-strengthened, tempered and laminated glass
- Damage to adjacent buildings or building components as a result of sunlight reflecting off of the window. This reflected light is not a defect or deficiency in the glass or the window
- Any sound that occurs from the grilles/grids tapping or otherwise striking the glass due to vibrations from use of the window or exterior vibrations to the windows (such as caused by opening or closing the window or a nearby door; animals, person, or objects striking the glass; wind; or outside traffic, trains, or airplanes, etc) is not considered an imperfection or defect, nor is the grille/grid touching the glass (even in triple-strength units) considered an imperfection or defect.
- Glass covered with after-market window films, coatings or other products not originally supplied by Simonton
- Stresses from localized heat which causes excessive temperature differentials over the glass
- Post-manufacture dissipation of inert gases (as Argon), or the amount of gas in Products with inert gas-filled insulating glass
- Scratches or other imperfections not readily observable beyond 4 feet away for standard glass and 11 feet for tempered glass
- Mineral deposits
- Internal and external condensation\*, frost, dew or mold resulting from humidity within the building or from outside conditions along with interior/exterior temperature differentials

\*There is no such thing as a condensation-free window in high humidity conditions. Controlling the amount of moisture in your home is the most effective action you can take to avoid internal condensation. External condensation happens when energy-efficient windows and doors keep heat inside your home in colder months. When heat does not escape to warm the outer pane of glass and the glass temperature drops below the outdoor dew point temperature, exterior condensation can occur. For additional information concerning condensation please visit [www.simonton.com/condensation](http://www.simonton.com/condensation).

## WHAT THIS LIMITED WARRANTY DOES NOT COVER

### a) Generally

This Limited Warranty does not include non-conformities or damages attributable to or arising from:

- Minor scratches or minor visual imperfections
- Negligence; vandalism, riot or civil disorder, acts of terrorism, improper use, installation, finishing, maintenance or operation inconsistent with Simonton's recommendations or with written instructions that are generally available in Simonton's installation instructions as updated by bulletins, other written communications or on Simonton's website ([www.simonton.com](http://www.simonton.com) or [www.simonton.com/support](http://www.simonton.com/support))
- Improper pre-installation storage, including inadequate shelter or inadequate venting of shipping wrap in hot locations
- Misapplication or faulty building design or construction, including inadequate flashings or caulking; building settlement or structural failures of walls or foundations
- Subjection to improper temperature, humidity, or other environmental conditions (e.g., harmful fumes, vapors, solvents, chemicals, or pollutants in the atmosphere)
- Normal wear and tear (e.g., wear and tear to weather-stripping or door bottom gaskets)
- The caulking used to seal the frames or trim packages
- Labor costs are not included under this Limited Warranty and neither Simonton nor its distributors will be responsible for any costs incurred in the removal, replacement, installation or reinstallation of the Product or any part thereof, furnished by Simonton under this Limited Warranty
- Product installations over an elevation of three stories, unless a written exception to this Limited Warranty exclusion has been obtained from Simonton in advance of such an installation
- Products installed other than in the United States or Canada

### b) Certain Environmental Conditions

**This Limited Warranty does not guarantee safety for persons or property, nor make a premises hurricane-proof or impact-proof. Follow weather and news reports in order to assess severe weather situations and obey local authorities' shelter and evacuation orders.**

This Limited Warranty does not cover damage attributable to or caused by acts of nature that include, but are not limited to stresses, high winds, floods, fire and other conditions that exceed Product designs that are test evaluated and certified as referenced in Simonton's published literature. **CERTIFICATION APPROVAL, RATING, AND REFERENCES TO OTHER PERFORMANCE STANDARDS MEAN THAT THE PRODUCT MEETS THE ESTABLISHED SPECIFICATION PARAMETERS OF THE CERTIFICATION PROCESS OR STANDARD TESTING IN PLACE AT THE TIME THE PRODUCT IS MANUFACTURED.** However, with exposure over time to environmental conditions (e.g., high-wind events and other forces of nature) the Product will be subjected to normal and abnormal wear



# Lifetime Limited Warranty

and its performance capability may change. Consult local building codes and laws, and the certification and rating agencies' published materials and websites, for guidelines on the standards necessary to meet all the applicable regulations and codes in the location of your residence or building. Product features designed to help address pressurization of a building during high-wind or other severe storm events are not a guarantee against water and air infiltration. Simonton is not responsible for claims or damages caused by water or air infiltration or improper installation. **PRODUCT SELECTION IS THE SOLE RESPONSIBILITY OF THE WARRANTY HOLDER.**

NOTE: Exterior accessories manufactured by Simonton for retrofit or new construction products are not designed and not intended by Simonton to be used by the Warranty Holder or its agents as a barrier against water infiltration and are **NOT A SUBSTITUTE FOR ADEQUATE FLASHINGS** or other appropriate building design, construction and installation considerations. Simonton is not responsible for building, structural, or other damage that has occurred as a result of water that may penetrate between the Product and any applied accessory.

## **c) Damage From Failure to Inspect Product Following Each High-wind or Impact Event**

Product that is subject to any high-wind event or the possibility of having been impacted by wind-borne debris should be promptly inspected by the Warranty Holder or by a building professional if the Warranty Holder cannot perform this inspection themselves or if there is concern about Product damage. Proper care and maintenance of the Product is the responsibility of the Warranty Holder and failure to do so may void the Limited Warranty. Although a Product may appear to be in good working condition, the effects of such an event(s) may have adversely affected the ability of the Product to provide subsequent protection against another such event.

## **This Limited Warranty's Exclusive Remedy**

If the Product or any of its components fail to meet this Limited Warranty, Simonton's sole obligation is, to either (at Simonton's options and in its sole discretion): a) repair the component (aesthetic matching not guaranteed); or b) provide replacement component(s) to the Warranty Holder or to Simonton's designated dealer (aesthetic matching not guaranteed); or c) refund the Warranty Holder's purchase price (the lesser of the original Product, component purchase price or the original catalog list price). The cost of labor is Simonton's obligation only to the extent that it is expressly provided under "Coverage." Repaired or replaced components are warranted only on the same terms as in the Limited Warranty and for the remainder of the Warranty Period. Simonton reserves the right to discontinue or change any Product. If the Product or component is not available, Simonton may select and provide a replacement Product or component of equal quality and price. This is the Warranty Holder's sole and exclusive remedy for the Product under this Limited Warranty. By example but not limitation, this Limited Warranty does not cover the following costs and expenses: (i) except as expressly set forth in this Limited Warranty, labor for removing, reinstalling, refinishing Product (or other materials that are removed, reinstalled or refinished to repair or replace the Product); (ii) shipping/freight expenses to return the Product to Simonton; (iii) normal maintenance; or (iv) consequential, incidental, special, or indirect losses or damages of any kind.

## **Disclaimer of Warranties**

THIS LIMITED WARRANTY IS IN LIEU OF AND EXCLUDES ALL OTHER WARRANTIES NOT EXPRESSLY SET FORTH HEREIN, EXPRESS OR IMPLIED BY OPERATION OF LAW OR OTHERWISE, INCLUDING BUT NOT LIMITED TO ANY IMPLIED WARRANTIES OF MERCHANTABILITY OR FITNESS FOR A PARTICULAR PURPOSE. TO THE EXTENT THAT ANY IMPLIED WARRANTIES MAY NONETHELESS EXIST BY OPERATION OF LAW, SUCH WARRANTIES ARE LIMITED TO THE DURATION PROVIDED BY LAW. SOME STATES/PROVINCES DO NOT ALLOW LIMITATIONS ON HOW LONG AN IMPLIED WARRANTY LASTS, SO THE ABOVE LIMITATIONS MAY NOT APPLY. SIMONTON DOES NOT AUTHORIZE ANYONE TO CREATE FOR IT ANY OBLIGATION OR LIABILITY IN CONNECTION WITH PRODUCTS.

## **Limitation of Liability**

SIMONTON'S SOLE LIABILITY UNDER THIS LIMITED WARRANTY IS REPLACEMENT, REPAIR, OR REFUND OF THE PURCHASE PRICE AS SET FORTH ABOVE (AND LABOR AS EXPRESSLY SET FORTH ABOVE). IN NO EVENT, WILL SIMONTON BE LIABLE FOR INCIDENTAL, CONSEQUENTIAL, INDIRECT, SPECIAL, OR PUNITIVE DAMAGES INCLUDING, BUT NOT LIMITED TO, DAMAGE OF ANY KIND TO A PREMISES, LOSS OF PRODUCT USE, REINSTALLATION, LABOR, REMOVAL, REFINISHING (EXCEPT TO THE EXTENT EXPRESSLY PROVIDED IN THIS LIMITED WARRANTY), TEMPORARY OR PERMANENT RELOCATION OF RESIDENTS OR PROPERTY, LOSS OF PROFITS/REVENUE, INTEREST, LOST GOODWILL, WORK STOPPAGE, IMPAIRMENT OF OTHER GOODS OR WORK, INCREASED OPERATING EXPENSES, EMOTIONAL DISTRESS CLAIMS, OR CLAIMS OF THIRD PARTIES FOR SUCH DAMAGES, WHETHER BASED ON CONTRACT, WARRANTY, TORT (INCLUDING, BUT NOT LIMITED TO, STRICT LIABILITY OR NEGLIGENCE) OR OTHERWISE, EVEN IF ADVISED OF THE POSSIBILITY OF SUCH DAMAGES. SOME STATES DO NOT ALLOW THE EXCLUSION OR LIMITATION OF INCIDENTAL OR CONSEQUENTIAL DAMAGES, SO THE ABOVE LIMITATION OR EXCLUSION MAY NOT APPLY IN SUCH STATES. THIS LIMITED WARRANTY PROVIDES SPECIFIC LEGAL RIGHTS BUT THE WARRANTY HOLDER MAY HAVE OTHER RIGHTS WHICH VARY FROM STATE TO STATE. IF THIS LIMITED WARRANTY IS DEEMED TO HAVE FAILED OF ITS ESSENTIAL PURPOSE, IN NO EVENT WILL SIMONTON'S TOTAL LIABILITY EXCEED THE LESSER OF THE PRODUCT'S PURCHASE PRICE OR THE NON-CONFORMING COMPONENT'S PURCHASE PRICE.

## **Claims**

Claims must be initiated during the Warranty Period. To initiate a claim, please contact the builder, dealer or contractor who installed or sold the Product. . If that party is unknown or unreachable, contact Simonton Windows & Doors, Inc. at [www.simonton.com/support](http://www.simonton.com/support) or [www.simonton.com/warranty](http://www.simonton.com/warranty). Claimant will be required to provide proof of premises ownership, the date of the original Product purchase, the order number (bar code located on the sash head, jamb or sill of each Product), and specify the alleged defect. Simonton reserves the right to inspect the Product, and Claimant may be required to return the Product or component to Simonton (at Claimant's expense).

# Lifetime Limited Warranty

## CARE AND MAINTENANCE OF YOUR VINYL WINDOWS AND DOORS

Congratulations on choosing windows and doors with the virtually maintenance-free benefits of vinyl. As a result, with proper care and cleaning, your windows and doors can keep their beautiful appearance for years.

Like any surface exposed to outside elements, your windows and doors will get dirty from time to time, but cleaning them is rather simple. Often, heavy rains will wash the vinyl clean, but if the rain isn't enough, you can restore the splendor of your windows and doors by following these straightforward instructions.

- Wash using a mild detergent (if necessary) and a soft cloth or ordinary soft bristle brush. **Do not clean the windows or doors with a high-pressure washer. The extreme spray pressure could crack or destroy the caulking around the window or door.**
- For difficult to remove dirt and stains use the readily available household cleaners listed on the chart. Follow the manufacturer's instructions on the use of the cleaners.
- In some cases, you may wish to use a mildly abrasive cleanser such as Soft Scrub® or a Mr Clean® Magic Eraser® but the use of any abrasive material could scratch the surface of the glass and window or door frame.
- **DO NOT USE** liquid grease remover, adhesive removers such as Goo Gone®, strong soaps or detergents containing organic solvents, nail polish remover, furniture polish or cleaners containing chlorine bleach. These items could affect the surface appearance of the vinyl.

### CLEANERS TO HELP REMOVE STAINS FROM VINYL WINDOWS AND DOORS

Bubble Gum	Fantastik® All Purpose Cleaner, Murphy Oil Soap®, solution of 30% vinegar and 70% water, Windex®
Crayon	Lestoil®, Mr Clean® Magic Eraser®
DAP (oil-based caulk)	Fantastik® All Purpose Cleaner
Dirt and Scuff Marks	Fantastik® All Purpose Cleaner, Lestoil®, Mr Clean® Magic Eraser®, Murphy Oil Soap®
Felt-tip pen	Fantastik® All Purpose Cleaner, water-based cleansers
Grass	Fantastik® All Purpose Cleaner, Lysol®, Murphy Oil Soap®, Windex®
Lipstick	Fantastik® All Purpose Cleaner, Lysol®, Murphy Oil Soap®
Lithium Grease	Fantastik® All Purpose Cleaner, Lestoil®, Murphy Oil Soap®, Windex®
Mold and Mildew	Fantastik® All Purpose Cleaner, solution of 30% vinegar and 70% water, Windex®
Motor Oil	Fantastik® All Purpose Cleaner, Lysol®, Murphy Oil Soap®, Windex®
Oil	Soft Scrub®
Paint	Mr Clean® Magic Eraser®
Pencil	Mr Clean® Magic Eraser®, Soft Scrub®
Rust	Fantastik® All Purpose Cleaner, Murphy Oil Soap®, Windex®
Tar	Soft Scrub®

\*Cleaning materials are listed in alphabetical order

# Simonton ProFinish®

## Glass

- For routine cleaning, we recommend using a 30% white vinegar and 70% water premixed cleaning solution. Use a soft, lint-free cloth or paper towels to wipe clean, rubbing in different directions. If there is any residual streaking, rinse with clear water and wipe again
- Ammonia-free glass cleaners such as Windex® also produce good results
- Rinse windows and doors first if there is excessive dirt and debris
- Thoroughly dry water and/or cleaning solution from glass and all window surfaces
- **DO NOT clean glass with a high-pressure washer. The extreme spray pressure could damage the glazing and destroy the seal of the insulating glass unit**
- **DO NOT use razor blades, metal blades, abrasive cleaning solutions or materials to clean the glass due to the high probability that damage to the glass will occur**

## Exterior Coatings

- Wash using mild detergent (if necessary) and a soft cloth or ordinary long-handled soft bristle brush. **Do not clean the exterior coating with a high-pressure washer. The extreme spray pressure could damage the surface or crack or destroy the caulking around the window or door**
- Mild window cleaners that are safe to clean the exterior coating on windows and doors include Windex®, Formula 409® and Fantastik®
- **DO NOT USE liquid grease remover, strong soaps and detergents containing organic solvents, nail polish remover, furniture polish or cleansers containing chlorine bleach. These items could affect the surface appearance of the vinyl**

## Screens

- For routine cleaning carefully vacuum your window screens
- To thoroughly clean window screens, remove the screens from the window frame. Place the screens on a flat surface (such as the driveway) and use mild soap and water with a soft bristle brush to remove dirt and grime. Clean both sides of the screen and around the interior and exterior of the frame. Rinse off the unit with lukewarm water. Allow the screen to dry completely before returning it to its placement in the window or door
- **DO NOT use a high-pressure washer to clean screens; it could damage the units**
- Use extreme care when cleaning aluminum mesh, since it can be dented or creased if too much pressure is placed on the screen

## OPERATION OF YOUR VINYL WINDOWS AND DOORS

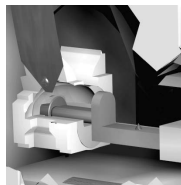
Along with being virtually maintenance-free, your windows and doors have been designed and manufactured to be thermally efficient, aesthetically pleasing and easy to operate. All operable sash on Double

# Lifetime Limited Warranty

Hung and Single Hung windows tilt in, Slider sash lift out, Casements open by turning the handle and patio doors feature corrosion-resistant rollers.

## To tilt in the operable sash on Double Hung and Single Hung windows, you must:

- Unlock the bottom sash and raise it approximately 4" above the frame
- On the top of the sash, you'll find the tilt latches. Slide the tilt latches toward the window lock and gently tilt and lower the sash towards you, letting it rest against the window sill
- If the sash is large and heavy, or the sash can't hang down freely, you may need assistance to support the tilted sash while cleaning. While cleaning the window, make sure you do not hold the tilted sash at a 90 degree angle and do not push up on the sash where it connects to the frame of the window. Doing these things may cause the sash to disengage from the frame. If this happens, see below instructions on how to re-insert the sash into the frame
- To clean the top sash on Double Hung windows, the bottom sash needs to be tilted in and resting on the sill prior to tilting the top sash. The top sash can tilt in and rest on the open tilted bottom sash for easy cleaning
- When finished cleaning, tilt the top and bottom sash up and snap the tilt latches into place. For safety, make sure the tilt latches are securely engaged
- If it becomes necessary to remove and reinsert the sash, tilt the sash inward to a 90-degree angle and lift the bottom of the sash up and out of the frame. To reinsert the sash into the frame, make sure both pivot bars (located at the bottom of the sash) are fully inserted into the balance shoes



Balance Shoe

## To remove a Slider sash, simply:

- Unlock the sash and slide it past the sash retainer insert located in the head. *Note: Some windows may have a sash retainer clip instead of an insert that must be removed before opening the sash*
- Lift the sash up into the head and pull the bottom of the sash towards you

## To operate Casements:

- Lift the locking lever on the side of the frame to unlock the sash. Turn the handle on the bottom of the frame to open the sash to the desired position
- Turn the handle in the opposite direction to close the sash. To lock the window, make sure the sash is fully closed then lower the locking lever on the side of the frame

## To lock doors:

- Close the operable panel and make sure it is fully against the frame
- Lock the panel with the lever located on the handle

Simonton ProFinish<sup>®</sup>



# Lifetime Limited Warranty



Activate your Lifetime Limited Warranty at [www.simonton.com/warranty](http://www.simonton.com/warranty). You will need the following information to complete the warranty registration. Please keep for your records.

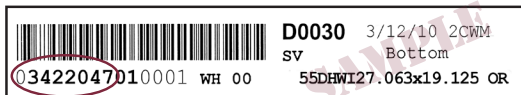
## PRODUCT INFORMATION

Installation Date \_\_\_\_\_

Order No. \_\_\_\_\_

## HOW TO LOCATE YOUR ORDER NUMBER

Locate the following label in the head, sill or jamb of operable windows & doors to find your order number. Label can also be found in the head of picture windows.



Number of Windows Purchased \_\_\_\_\_

## HOMEOWNER INFORMATION (please print)

Name \_\_\_\_\_

Address \_\_\_\_\_

City \_\_\_\_\_

State \_\_\_\_\_ Zip \_\_\_\_\_

Telephone \_\_\_\_\_

E-mail \_\_\_\_\_

## DEALER INFORMATION (please print)

Company Name \_\_\_\_\_

Dealer Name \_\_\_\_\_

Address \_\_\_\_\_

City \_\_\_\_\_

State \_\_\_\_\_ Zip \_\_\_\_\_

Telephone \_\_\_\_\_

E-mail \_\_\_\_\_

Distributor Name \_\_\_\_\_



Simonton Windows®, Simonton® and Simonton ProFinish® are trademarks of Simonton Windows & Doors, Inc. Ply Gem® and the stylized “P” are trademarks of Ply Gem Industries, Inc or its affiliates. Mr Clean® Magic Eraser® is a trademark of Procter & Gamble, Inc. Fantastik® and Windex® are trademarks S. C. Johnson & Son, Inc. Lestoil® and Formula 409® are trademarks of The Clorox Company. Soft Scrub® is a trademark of Henkel Corporation. Lysol® is a trademark of Reckitt Benckiser Inc. Murphy Oil Soap® is a trademark of Colgate-Palmolive Company. Goo Gone® is a registered trademark of Weiman Products, LLC.