

Inovo Upgrade Handle Patio Door Instructions

Effective Date 12/29/16

NOTE:

- Please confirm that the handle box contains all required parts before proceeding with the installation
- For proper operation, the door hardware must be installed in the order shown
- **WARNING:** See Step 7 to ensure your handle orientation is correct before beginning installation
- Refer to Figure 1 and the step by step photos when assembling and installing the handle set to the patio door

Tools Needed



#2 Phillips Screwdriver

NOTE: DO NOT USE POWER TOOLS, THEY COULD DAMAGE THE COMPONENTS

Handle Box Contents

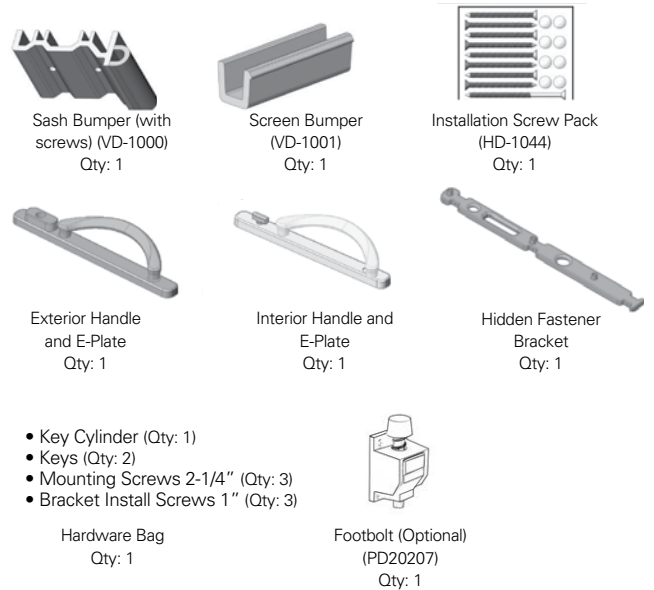
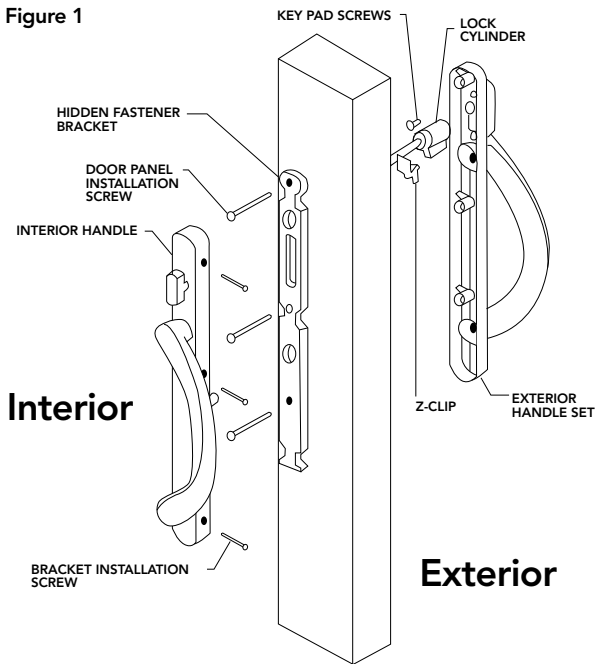


Figure 1



1. Remove key cylinder Z-Clip screw.
 - a. Install the key cylinder into the exterior plate.
 - b. Insert the Z-Clip over the key cylinder and secure it by inserting the pad screw that was removed.



2. Place exterior handle assembly against the exterior door stile. The handle of the assembly should point towards the glass of the door and the key cylinder tail should be in the slanted position to align with the slot in the lock.



3. Next place the hidden fastener bracket on the interior side of the door while holding the exterior handle assembly in place. Once this is on the door, the three mounting screws can be hand tightened to secure the exterior handle set to the door. (Do not over tighten)



(Continued from page 1)

Inovo Upgrade Handle Patio Door Instructions

4. Rotate the thumb turn on the interior handle assembly to the vertical position so that it is aligned with the key cylinder tail.
- NOTE:** When the key cylinder tail is in horizontal position, it should align with horizontal slot in the thumb turn shaft. Next, place the interior handle set onto the interior side of the door while ensuring the thumb turn shaft engages with the key cylinder.



5. Finally, install the three (3) cover screws into the handle. Start with the center screw, followed by the two outer screws.



6. Check the operation of the handle.
- NOTE:** Be sure to press the anti-slam pin for lock engagement.

7. Due to the fact that the upgrade handle comes pre-assembled, there will be instances when the handle is not in the correct direction for door operation.

NOTE: The handle grip should curve towards the glass of the operating panel. To change the handle orientation, the screws must be removed from the handle and the handle flipped as shown in photos 7a through 7c.



8. If the door is not locking properly there are two adjustments that can be made:
- Keeper location can be moved up or down by loosening the screws to adjust and then retightening them.
 - The lock hooks can be adjusted inward or outward from the door face to correctly engage the keeper.

