

Inovo Standard Handle Patio Door Instructions

Effective Date 12/29/16

NOTE:

- Please confirm that the handle box contains all required parts before proceeding with the installation
- For proper operation, the door hardware must be installed in the order shown
- Refer to Figure 1 and the step by step photos when assembling and installing the handle set to the patio door

Tools Needed



#2 Phillips Screwdriver

NOTE: DO NOT USE POWER TOOLS, THEY COULD DAMAGE THE COMPONENTS

Handle Box Contents

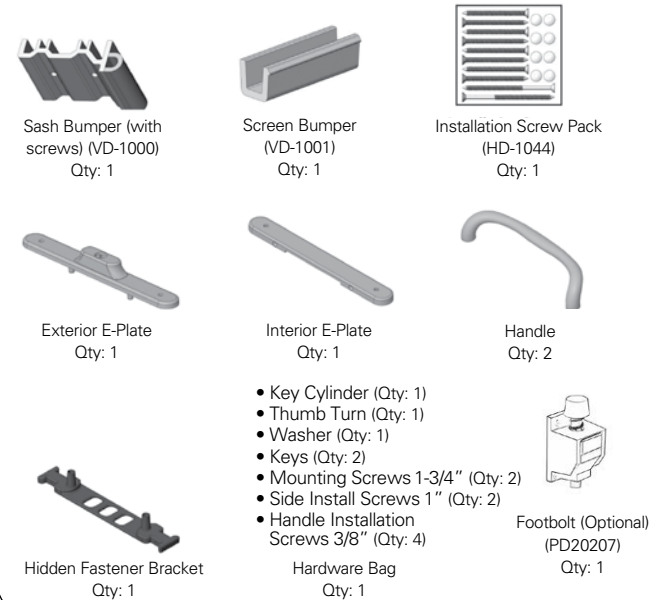
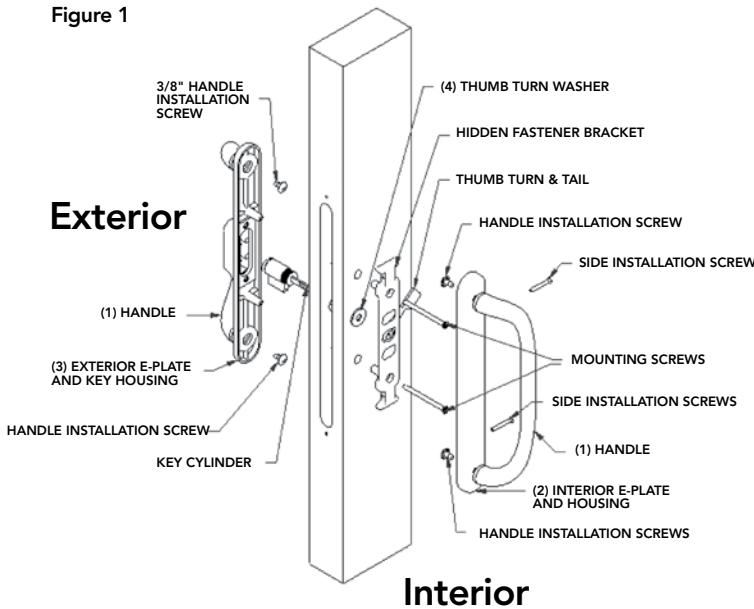


Figure 1



1. Attach handles to the interior and exterior E-plates with the four (4) 3/8" screws provided for the correct handle orientation for the door.

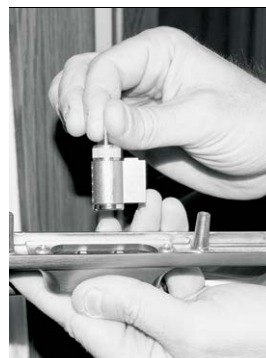
NOTE: The handle grip should angle towards the glass as well as the thumb turn notch in the interior E-plate.



2. Install plastic shoulder washer into the large fabricated hole in the panel.



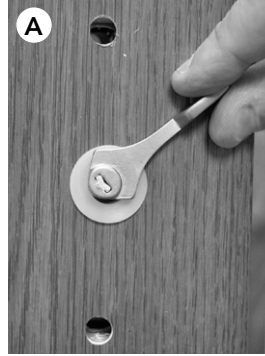
3. Place key cylinder in the exterior slot provided. Next, place the exterior handle set onto the exterior side of the door while ensuring the key cylinder shaft engages the lock. Hold in place and continue to Step 4 (if applicable-some doors do not have a key cylinder).



(Continued from page 1)

Inovo Standard Handle Patio Door Instructions

4. Place the thumb turn into the plastic shoulder washer, aligning the tail with the slot in the lock (Fig 4a). Next, place the hidden fastener bracket on the interior side of the door, while holding the thumb turn in place (Fig 4b). Once this is on the door, install by using two mounting screws to secure the exterior handle set to the door. (Fig 4c) (Do not over tighten)



5. Place the interior handle set onto the interior side of the door. Finally, install the two (2) cover screws into the handle and tighten.

6. Check the operation of the handle.

NOTE: Be sure to press the anti-slam pin for lock engagement.

7. If the door is not locking properly there are two adjustments that can be made:
- Keeper location can be moved up or down by loosening the screws to adjust and then retightening them.
 - The lock hooks can be adjusted inward or outward from the door face to correctly engage the keeper.

