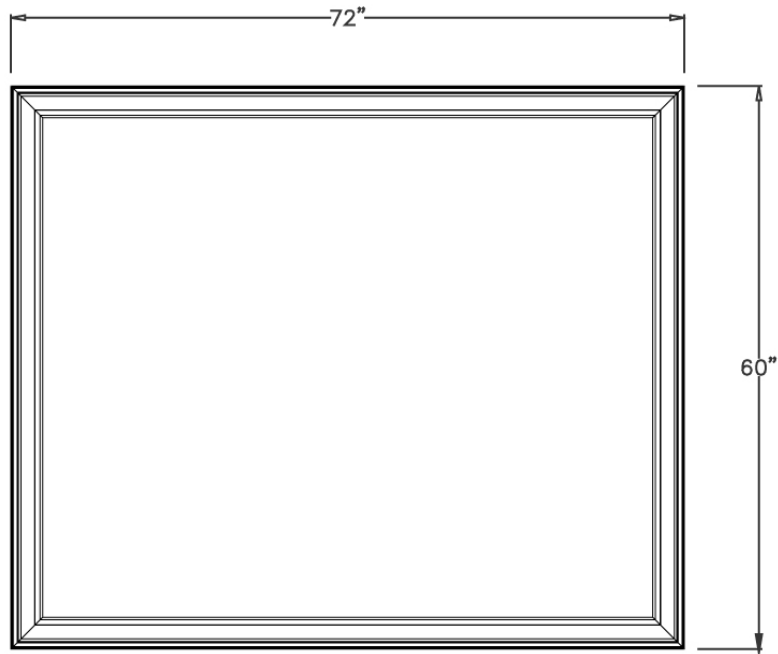


Fixed Unit and Picture Window

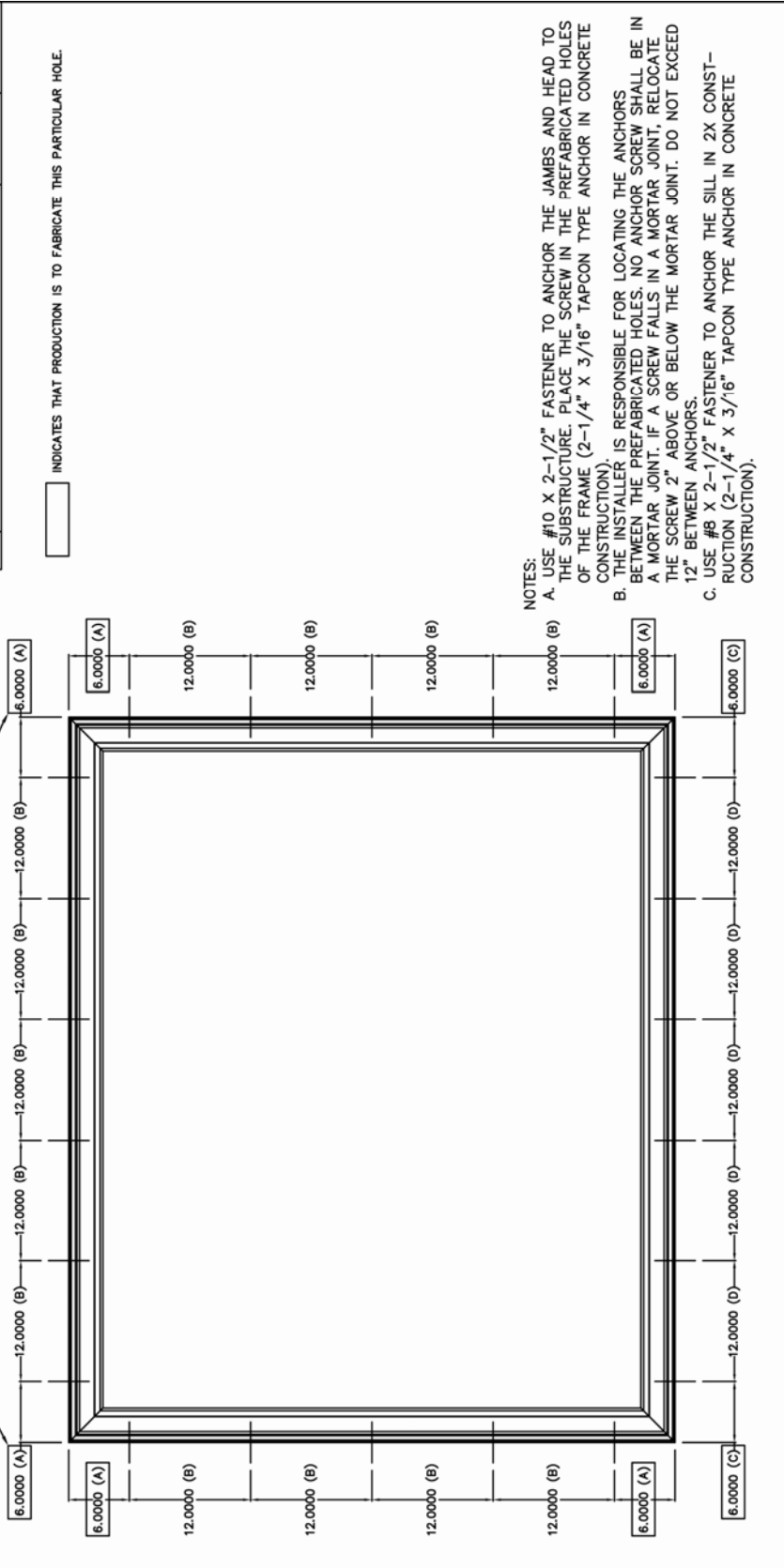


Product A:

- Simonton StormBreaker Plus® Vinyl Fixed Units and Picture Windows
- 72" x 60" tip-to-tip
- 1" Insulating Glass Unit w/Warm-edge Spacer System
- PVB/Tempered
- Sealant Glazed
- Specific hardware must be anchored to the opening. Refer to written installation instructions AND to applicable drawings sealed by a Florida professional engineer.

REV. #	REVISED BY:	DATE:
1	T.D.D.	10/11/07
2	T.D.D.	01/08/08
.	.	.
.	.	.
.	.	.

REV. #	REVISIONS:
1	REMOVED BRAND NAMES FROM THE SERIES.
2	CHANGED DRAWING NUMBER FROM IN0016.
.	.
.	.
.	.



NOTES:

A. USE #10 X 2-1/2" FASTENER TO ANCHOR THE JAMBS AND HEAD TO THE SUBSTRUCTURE. PLACE THE SCREW IN THE PREFABRICATED HOLES OF THE FRAME (2-1/4" X 3/16" TAPCON TYPE ANCHOR IN CONCRETE CONSTRUCTION).

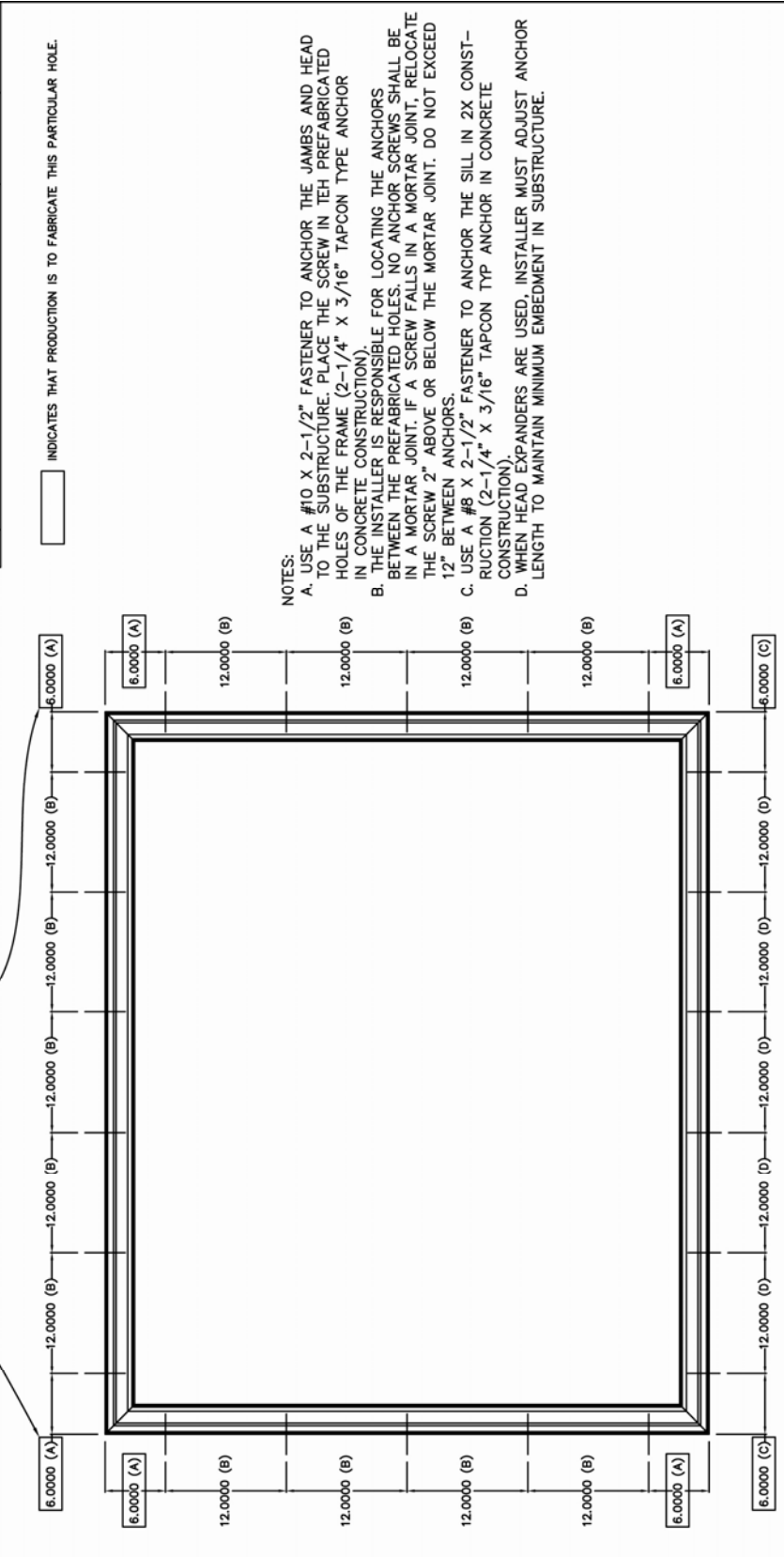
B. THE INSTALLER IS RESPONSIBLE FOR LOCATING THE ANCHORS BETWEEN THE PREFABRICATED HOLES. NO ANCHOR SCREW SHALL BE IN A MORTAR JOINT. IF A SCREW FALLS IN A MORTAR JOINT, RELOCATE THE SCREW 2" ABOVE OR BELOW THE MORTAR JOINT. DO NOT EXCEED 12" BETWEEN ANCHORS.

C. USE #8 X 2-1/2" FASTENER TO ANCHOR THE SILL IN 2X CONST- RUTION (2-1/4" X 3/16" TAPCON TYPE ANCHOR IN CONCRETE CONSTRUCTION).

<p>DISCLOSURE STATEMENT</p> <p>This document is the property of Simonton Windows, which retains all proprietary and other rights to its subject matter. This document is provided to the recipient on the expressed condition that it is not to be disclosed, reproduced in whole or in part, nor used in conjunction with the design, manufacture or repair of goods for anyone other than Simonton Windows without its consent. This restriction does not limit the recipient's rights to utilize information contained in this document which is properly obtained from another source.</p>		<p>MATERIAL:</p> <p>RMS FINISH: EXCEPT AS NOTED</p> <p>ALLOY & TEMPER: AREA:</p> <p>WEIGHT: VOLUME:</p> <p>SURFACE AREA: PERIMETER:</p> <p>FINISH TREATMENT:</p>	<p>Dimensional Tolerances Unless Otherwise Specified</p> <p>Angles</p> <p>Decimals</p> <p>.X ± .03</p> <p>.XX ± .01</p> <p>.XXX ± .005</p>	<p>SIZE: DRAWING NO.: REV.:</p> <p>A. IN0186 2</p> <p>DRAWN BY: DATE: 09/10/02</p> <p>J.D.D.</p> <p>CHECKED BY: DATE:</p> <p>APPRVD BY: DATE:</p>
<p>FILE: IN0186</p>		<p>SIMONTON®</p> <p>W I N D O W S</p> <p>1 Cochran Avenue</p> <p>Pennsboro, WV 26415</p> <p>SCALE: FIT SHEET: 1 of 1</p> <p>SERIES: RETROFIT, STORMBREAKER & STORMBREAKER PLUS - NH</p> <p>TITLE: FLORIDA RETROFIT INSTALLATION PROCEDURE</p>		

REV. #	REVISED BY:	DATE:
1	T.D.D.	10/11/07
2	T.D.D.	01/08/08
.	.	.
.	.	.
.	.	.

REV. #	REVISIONS:
1	REMOVED BRAND NAMES FROM SERIES.
2	CHANGED DRAWING NUMBER FROM IN0014.
.	.
.	.
.	.



NOTES:

- A. USE A #10 X 2-1/2" FASTENER TO ANCHOR THE JAMBS AND HEAD TO THE SUBSTRUCTURE. PLACE THE SCREW IN THE PREFABRICATED HOLES OF THE FRAME (2-1/4" X 3/16" TAPCON TYPE ANCHOR IN CONCRETE CONSTRUCTION).
- B. THE INSTALLER IS RESPONSIBLE FOR LOCATING THE ANCHORS BETWEEN THE PREFABRICATED HOLES. NO ANCHOR SCREWS SHALL BE IN A MORTAR JOINT. IF A SCREW FALLS IN A MORTAR JOINT, RELOCATE THE SCREW 2" ABOVE OR BELOW THE MORTAR JOINT. DO NOT EXCEED 12" BETWEEN ANCHORS.
- C. USE A #8 X 2-1/2" FASTENER TO ANCHOR THE SILL IN 2X CONSTRUCTION (2-1/4" X 3/16" TAPCON TYP ANCHOR IN CONCRETE CONSTRUCTION).
- D. WHEN HEAD EXPANDERS ARE USED, INSTALLER MUST ADJUST ANCHOR LENGTH TO MAINTAIN MINIMUM EMBEDMENT IN SUBSTRUCTURE.

<p>DISCLOSURE STATEMENT</p> <p>This document is the property of Simonton Windows, which retains all proprietary and other rights to its subject matter. This document is provided to the recipient on the expressed condition that it is not to be disclosed, reproduced in whole or part, nor used in conjunction with the design, manufacture or repair of goods for anyone other than Simonton Windows without its consent. This restriction does not limit the recipient's rights to utilize information contained in this document which is property obtained from another source.</p>		<p>MATERIAL:</p> <p>RMS FINISH: EXCEPT AS NOTED</p> <p>ALLOY & TEMPER:</p> <p>WEIGHT:</p> <p>SURFACE AREA:</p> <p>FINISH TREATMENT:</p>	<p>Dimensional Tolerances Unless Otherwise Specified</p> <p>Angles 0° ± 30 min. .X ± .03 .XX ± .01 .XXX ± .005</p>	<p>SIMONTON® W I N D O W S 1 Cochran Avenue Pennsboro, WV 26415</p> <p>SCALE: FIT SHEET: 1 of 1</p> <p>SERIES: RETROFIT, STORMBREAKER & STORMBREAKER PLUS - PW TITLE: FLORIDA RETROFIT INSTALLATION PROCEDURE</p>	<p>SIZE: DRAWING NO.: A IN0184 REV.: 2</p> <p>DRAWN BY: J.D.D. DATE: 09/10/02</p> <p>CHECKED BY: DATE:</p> <p>APPROV BY: DATE:</p>
--	--	--	---	--	--