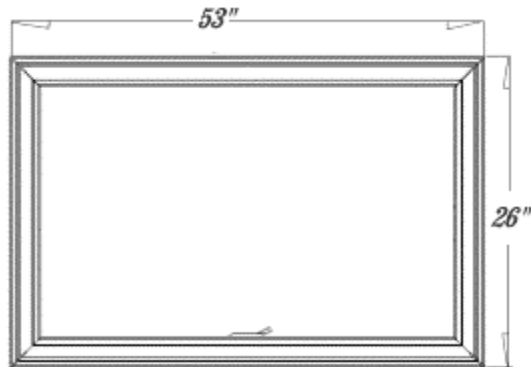


Awning



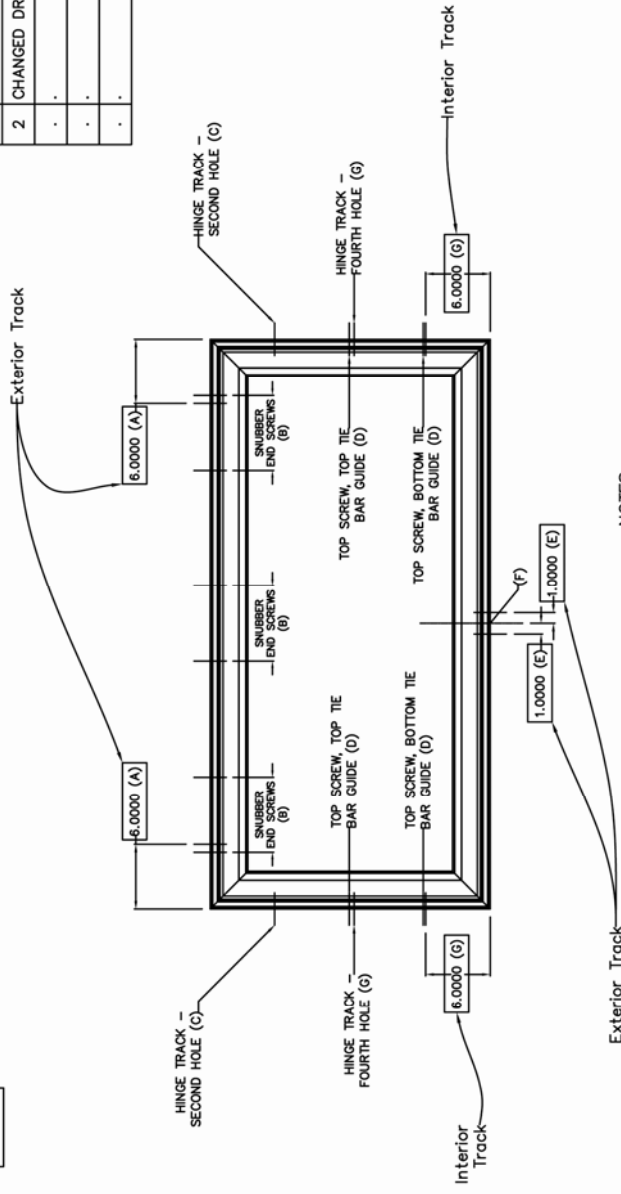
Product E:

Simonton StormBreaker Plus® Vinyl Awning

- 53" x 26" tip-to-tip
- 1" Insulating Glass Unit w/Warm-edge Spacer System
- PVB/Tempered (all associated glass Double-strength or better)
- Sealant Glazed
- No Reinforcement
- Specific hardware must be anchored to the opening. Refer to written installation instructions on AND to applicable drawings sealed by a Florida professional engineer.

REV. #	REVISIONS:	REVISED BY:	DATE:
1	REMOVED BRAND NAMES FROM THE SERIES.	T.D.D.	10/11/07
2	CHANGED DRAWING NUMBER FROM IN0032.	T.D.D.	01/09/08
.	.	.	.
.	.	.	.
.	.	.	.

INDICATES THAT PRODUCTION IS TO FABRICATE THIS PARTICULAR HOLE.



UNIT WIDTH	# SNUBBERS
LESS THAN 30"	1
30" THRU 48"	2
48" THRU 55"	3

NOTES:

- A: USE #10 X 2-1/2" FASTENER TO ANCHOR HEAD TO SUBSTRUCTURE. LOCATE THE SCREW ON THE EXTERIOR PLANE OF THE FRAME. (3" X 3/16" TAPCON TYPE ANCHOR TO ANCHOR TO MASONRY)
- B: PLACE #8 X 2-1/2" SCREWS THROUGH HOLES IN EACH END OF THE 8" SNUBBER. THESE SCREWS WILL ANCHOR THE SNUBBERS THROUGH THE FRAME TO THE SUBSTRUCTURE. THE NUMBER OF SNUBBERS USED IS REDUCED AS THE WIDTH OF THE UNIT DECREASES. (SEE IMPACT SNUBBER CHART). (USE 3-1/2" X 3/16 TAPCON TYPE ANCHOR TO ANCHOR TO MASONRY)
- C: INSERT #8 X 2-1/2" SCREW THROUGH THE SECOND HOLE OF THE HINGE TRACK, ANCHORING THE HINGE TRACK THROUGH THE JAMBS INTO THE SUBSTRUCTURE.
- D: REPLACE SCREW IN TOP HOLE OF EACH TIE BAR GUIDE WITH #8 X 3" FASTENER, ANCHORING THE TIE BAR GUIDE TO THE SUBSTRUCTURE.
- E: USE A #10 X 2-1/2" FASTENER (2" X 3/16" TAPCON TYPE ANCHOR TO ANCHOR TO MASONRY) TO ANCHOR TO 2X. LOCATE THE SCREWS ON THE EXTERIOR PLANE OF THE FRAME.
- F: REPLACE A CENTER SCREW OF THE OPERATOR WITH #8 X 2-1/2" FASTENER.
- G: INSERT A #10 X 2-1/2" FASTENER IN THE HOLE OF THE HINGE TRACK CLOSEST TO THE SILL OR IN THE FABRICATED HOLE LOCATED 6" ABOVE THE SILL IN EACH JAMB.

<p>SIMON TON W I N D O W S 1 Cochran Avenue Pensacola, WV 26415</p>		<p>SIZE: DRAWING NO.: A IN0199 REV.: 2</p>
<p>MATERIAL:</p>		<p>DRAWN BY: DATE: J.D.D. 09/10/02</p> <p>CHECKED BY: DATE: APPRVD BY: DATE:</p>
<p>RMS FINISH: EXCEPT AS NOTED</p> <p>ALLOY & TEMPER:</p> <p>WEIGHT:</p> <p>SURFACE AREA:</p> <p>FINISH TREATMENT:</p>		<p>SCALE: FIT SHEET: 1 of 1</p> <p>SERIES: RETROFIT, STORMBREAKER & STORMBREAKER PLUS - AW</p> <p>TITLE: FLORIDA RETROFIT INSTALLATION PROCEDURE</p>
<p>DISCLOSURE STATEMENT This document is the property of Simonon Windows, which retains all proprietary and other rights to its subject matter. This document is provided to the recipient on the expressed condition that it is not to be disclosed, reproduced in whole or in part, nor used in conjunction with the design, manufacture or repair of goods for anyone other than Simonon Windows without its consent. This restriction does not limit the recipient's rights to utilize information contained in this document which is properly obtained from another source.</p>		<p>Dimensional Tolerances Unless Otherwise Specified</p> <p>Decimals Angles .X ± .03 .XX ± .01 .XXX ± .005</p>